
Item 7 – SEND Inspection Presentation attached

This page is intentionally left blank

SEND Inspection Update Health and Wellbeing Board July - 2019

3



Serving the people of Cumbria

Contents

- Inspection background
- Headline findings
- Strengths and Areas for Improvement
- Statement of Action
- Next steps

4

Background

- 18 – 22 March – Ofsted and CQC joint inspection of the local area
- Judging effectiveness of implementing the disability and SEN reforms 2014
- Meetings with a range of professionals, parents and carers, portfolio holder
- Visits to schools and settings

Headline findings

- The impact of the SEND reforms on children, young people and families in Cumbria is variable and there has not been enough pace in implementing the reforms.
- There is a lack of joint working between health, care and education and inequitable access to services
- Some parents and carers have lost faith and trust in the local area and co-production is weak. However -
- Leaders are beginning to develop a clearer understanding of the main strengths and weaknesses and there is glowing praise about individual staff members.
- There are strengths identified within the report to build upon

The effectiveness of the local area in identifying children and young people's special educational needs and/or disabilities

Strengths

- Location of children's centres – accessible
- New electronic patient record system in health
- Early identification in early years
- Transition between early years and primary

Areas for development

- Access to specialist assessments of need
- Variation in delivery of healthy child programme
- Systems for identifying less obvious need
- Local offer
- Ability of schools to identify needs

The effectiveness of the local area in meeting the needs of children and young people with special educational needs and/or disabilities

Strengths

- More CYP with SEND in mainstream provision
- Special school provision
- Quality of frontline workers
- EHCP timeliness
- The virtual school and YOT
- Joint working – SEND & social care teams
- SENDIAS
- Post diagnostic support

Areas for development

- ASD assessments
- Low take up of personal budgets
- Short breaks offer is too narrow
- Inequitable access to services (e.g. core CAMHS)
- Variation in how well mainstream schools meet needs
- Lack of suitable alternative provision
- Weaknesses in the support emotional and mental health
- Quality of EHCPs
- Parent Carer Forum lacks influence

∞

The effectiveness of the local area in improving outcomes for children & young people with special educational needs and/or disabilities

Strengths

- Health support to early years settings
- Academic outcomes for CYP with an EHCP
- SEND EET
- School attendance

Areas for development

- Academic outcomes at SEN Support less impressive
- Too few take up personal budgets or access short breaks
- Preparation for Adulthood
- Lack of systematic approach to preparation for Independent Living

Outcome

- The local area have been issued with a Written Statement of Action – LA and CCG are jointly responsible for this
- 9 key areas highlighted for improvement
- Quarterly monitoring visits
- Re-inspection in approximately 18 – 24 months

10

WSoA Key Areas

1. Lack of a deep understanding of the needs of the SEND population in the local area.
2. Lack of a clear understanding among leaders across the partnership of the strengths and weaknesses in their respective areas of responsibility.
3. Limited joint working, including the planning and commissioning of services to meet the needs of those with SEND, between education, health and care.
4. Lack of trust and faith in the local area's work from too many parents and carers.
5. Limited involvement of children, young people and their families in the coproduction of the services, resource and support that they need.

11

WSoA Key Areas/2

6. Weaknesses in the approach to supporting the emotional health and wellbeing of children and young people with SEND, particularly those with ASD who face challenges in relation to their social, emotional and mental health
7. Inconsistent application of the local area's strategy for identifying, assessing and meeting the needs of children and young people at the SEN support stage
8. Weaknesses in the local area's systems for ensuring a smooth transition between children and adult services and preparing children and young people for adulthood
9. Inequities that exist in access to, and performance of, services between different geographical areas within Cumbria.

12

Structure of Improvement Activity

- 1 partnership improvement board
- 6 thematic priority sub-groups
- Early drafts have been agreed in principle by DfE advisor

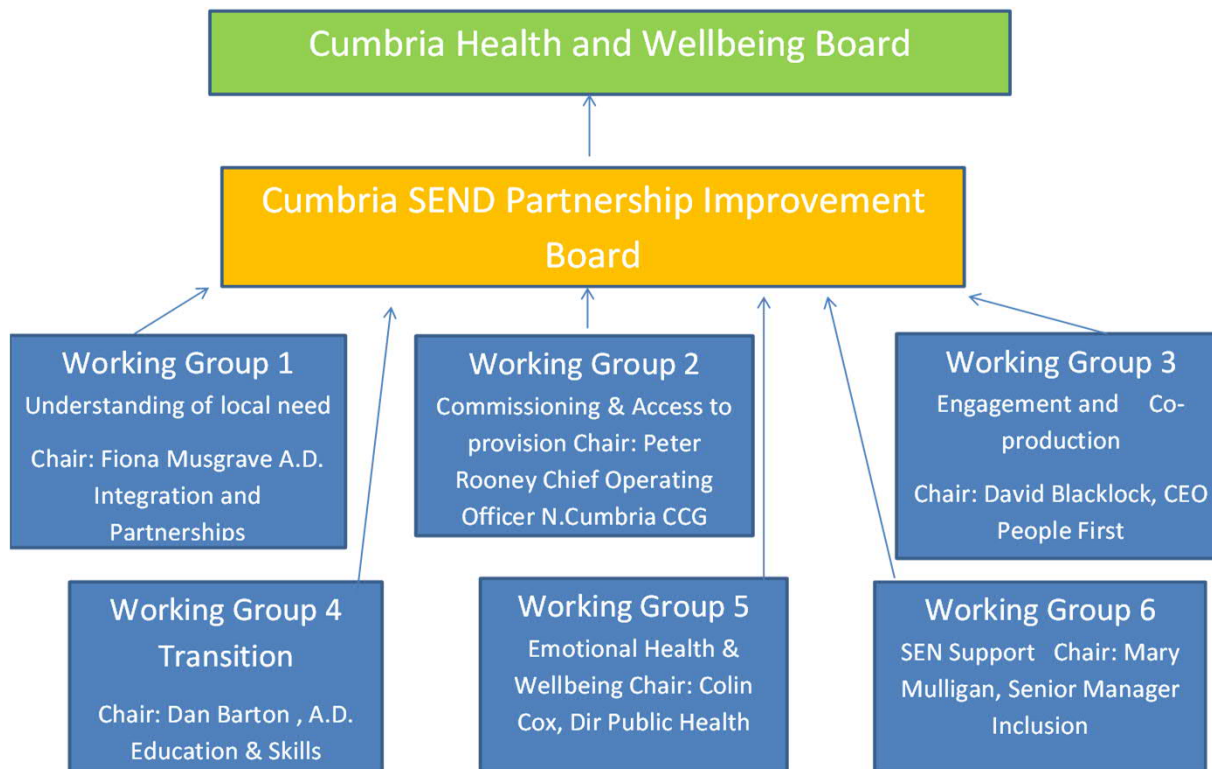
13

Priority sub-groups

1. Understanding of Local Need
2. Commissioning and Access to Provision
3. Engagement and Co-production
4. Transition
5. Emotional Health and Wellbeing
6. SEN Support

WSoA - proposed* reporting structure

Reporting Structure Cumbria SEND Improvement Written Statement of Action



15

Next Steps

- Submission of Cumbria WSoA by 21 August 2019
- Governance structures – Health and Wellbeing Board, SEND Improvement Board – Working Groups
- Parent-carer involvement in groups
- Detailed action plans
- Senior accountable officers
- Support from DfE and NHSE advisors. Confirmed structure will need to continue until at least re-inspection
- Re-inspection in 18 months

Questions

This page is intentionally left blank