

Cumbria Strategic Housing, Homeless and Wellbeing Group  
Presentation to Health and Wellbeing Board  
20th November 2020

Andrea Smith – Allerdale Borough Council  
Julia Westaway – Morecambe Bay CCG NHS



## Purpose

The purpose is to inform the Health and Wellbeing Board of the work that is being undertaken by district Councils and Partners in response to the needs of homelessness, rough sleeping and temporary accommodation during pandemic.

To outline the next steps in terms recovery and continue joint working during the next phase.

## Recommendations to Health and Wellbeing Board

That the Board Note:

- The work that was undertaken during the first phase of Covid
- The lessons learned in Lancashire and South Cumbria
- The work that is being undertaken to prepare for winter and the Covid second wave
- The need to embed and expand the improved system working that has developed as a result of Covid response.

## Background Cumbria Housing Group

The Cumbria Housing Group is a strategic partnership consisting of the six District Councils; Cumbria County Council; and the Lake District National Park Authority.

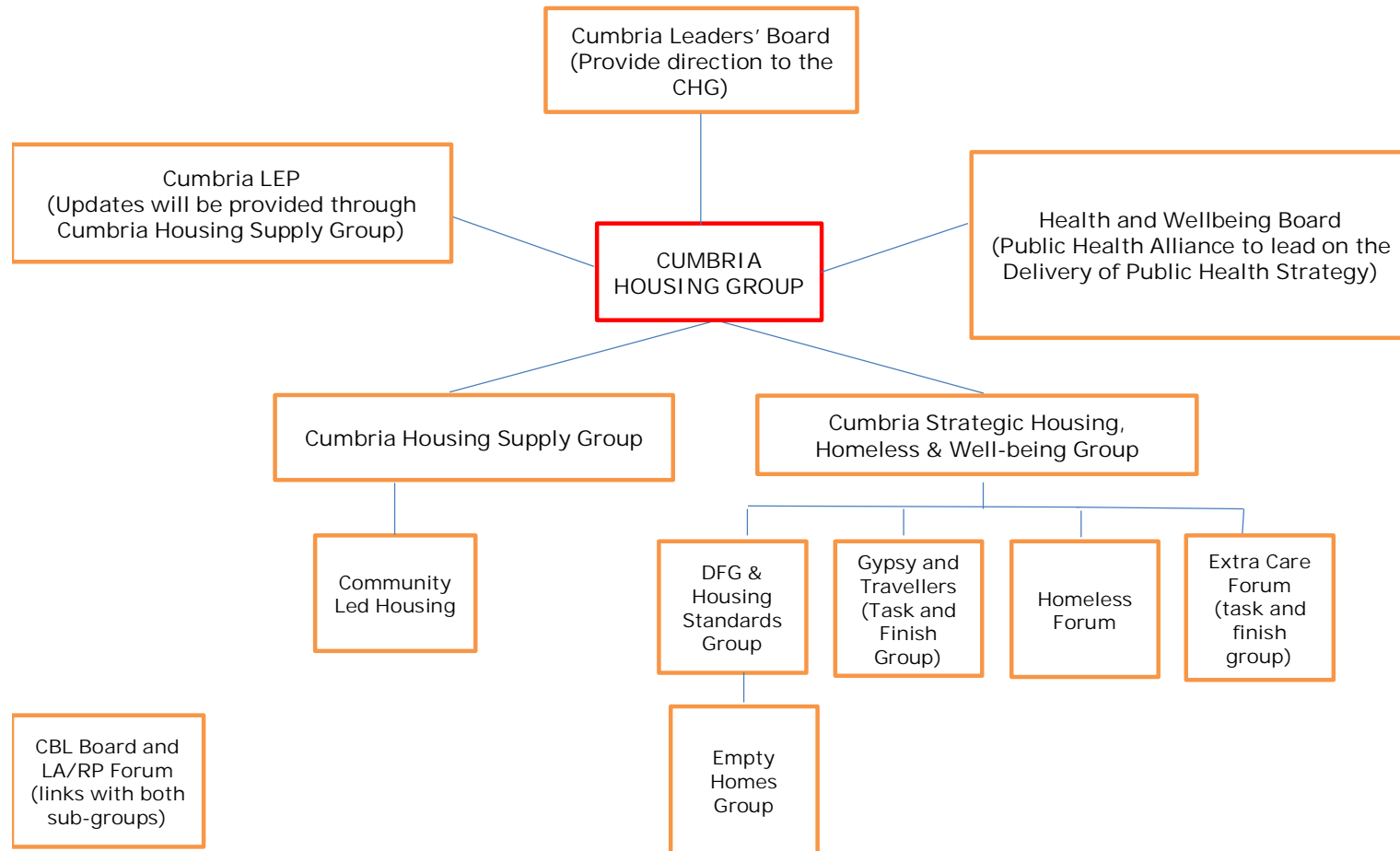
The Cumbria Housing Statement 2020 has three key priorities:-

- Housing Growth, Affordability and Community Sustainability
- Improving Living Conditions and Creating Thriving Communities
- Supporting Independent Living and Helping People Achieve Healthier, Happier Lives.



# Cumbria Housing Group

CUMBRIA HOUSING STRUCTURE 2020



## Background

- On the 26 March 2020 the Ministry of Housing Communities and Local Government (MHCLG) wrote to local authorities outlining a joint responsibility to safeguard as many homeless people as possible from COVID-19.
- This was followed by a strategy from MHCLG based on NHS medical guidance and support which aims to reduce the impact of COVID-19 on people facing homelessness and prevent deaths.
- Attached to the letter was additional guidance, agreed with NHS England and Public Health England stating that where possible people should be triaged into three cohorts:
  - The symptomatic group –COVID-CARE sites
  - The asymptomatic high clinical risk group - COVID-PROTECT sites
  - The asymptomatic and low risk group –current service provisions or in accommodation to meet guidance on self-isolation

The guidance also suggested that all partners need to be involved in a coordinated and planned way .

## Current Position – Demand and Accommodation

- LAs homeless teams have been overwhelmed over the last 6 months with a significant increase on service delivery.
- There is an on-going demand on the numbers of people who are either potentially homeless, homeless and rough sleepers presenting for advice, support and assistance. In addition to these cases the teams are still dealing with other homeless cases and families that need assistance.
- During the pandemic some have seen a decrease in Homeless prevention cases where the decrease is could be attributed to the freeze of evictions/lettings during lockdown and extended notice periods.

## Accommodation to support homeless delivery 2020

	Temporary Accommodation Units	Rough Sleeper Accommodation	B&B/Hotels	Other accommodation/support
Allerdale	7 units	2 units	additional 18 rough sleepers supported	secured addition property from local registered housing provider for domestic violence clients
Barrow	19 units	6 units	3 rooms with an option for a further 7 if needed.	Identified an empty property to bring back into use for conversion/ bed units for complex needs.
Carlisle	21 units of 50.	Utilising existing units at reduced level.	Limited ability access due to the complex needs of clients and appropriateness of clients.	Domestic abuse units, safe house provision and self isolation units for those confirmed as covid positive or hospital discharges remain open and responsive to local needs.
Copeland	8 units	Utilising other forms of accommodation	2 units .	Increase in out of hours led to the Council running a pilot scheme with local homeless provider to filter out calls that were non emergencies or homeless related
Eden	8 units .	4 units	2 units utilised.	Planned to place 5 households currently in TA to move onto supported tenancies.
South Lakeland	17 units	10 units		accommodated an additional 37 households simply due to COVID restrictions.
<b>Total</b>	<b>80 units across Cumbria</b>	<b>22 units</b>	<b>25 units</b>	



## 131 Supported Housing Units of Low Level Support in Cumbria

Allerdale	Generic Units of support
<b>Generic Supported Accommodation Based Units and Dispersed - Total</b>	<b>21</b>
Barrow-in-Furness	Generic Units of support
<b>Generic Supported Accommodation Based Units and Dispersed – Total</b>	<b>21</b>
Carlisle	Generic Units of support
<b>Generic Supported Accommodation Based Units and Dispersed - Total</b>	<b>45</b>
Copeland	Generic Units of support
<b>Generic Supported Accommodation Based Units and Dispersed - Total</b>	<b>10</b>
Eden	Generic Units of support
<b>Generic Supported Accommodation Based Units and Dispersed - Total</b>	<b>16</b>
South Lakeland	Generic Units of support
<b>Generic Supported Accommodation Based Units and Dispersed - Total</b>	<b>18</b>

## Current Position – Demand and Accommodation

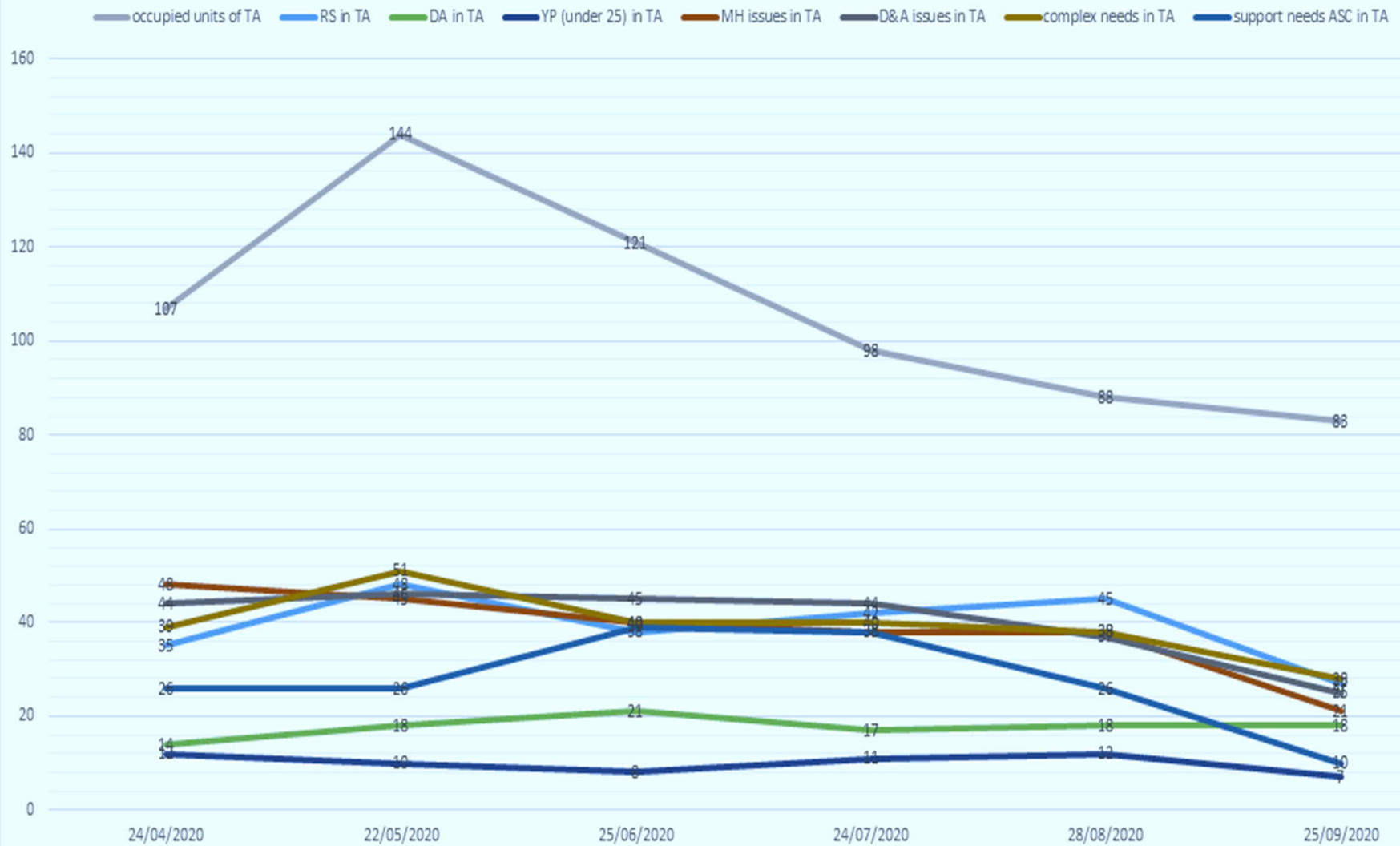
Financial Implications on Councils: **Total £530,993.00 up to Sept 2020**

	Spend	Grants - Central Government	Other Grants	NSAP funding - short term
Allerdale	£142K	£6K immediate contingency fund	£5K additional support need	£82,288
Barrow	£44,058K	£6K immediate contingency fund to help rough sleepers,	£5K additional support need	£0
Carlisle	£141K	£1,650K immediate contingency fund to help rough sleepers,	£5K additional support need	£46,600
Copeland	£69,450	£1,650 as a grant to help rough sleepers and £4K	£5K additional support need	£4,000
Eden	£53K	£6K immediate contingency fund to help rough sleepers,	£5K additional support need	£0
South Lakeland	£80,485	£6K immediate contingency fund to help rough sleepers. £150K Council grant allocation from Covid.	£5K additional support need	£35,932

## Cumbria Picture – Homeless

From 24 March to 16 <sup>th</sup> October 20	Emergency Accommodation	Emergency Accommodation	Statutory Homeless Assessments	Statutory Homeless Assessments
	2019	2020	2019	2020
<b>Allerdale</b>	146	266	177	243
<b>Barrow</b>	27	33	211	149
<b>Carlisle</b>	125* 50 units available (throughput rate 2.5x)	114* 21 / 50 shared units out of use due to C19 safety requirements (throughput rate 4x)	384	280
<b>Copeland</b>	17	65	231	167
<b>Eden</b>	11	40	81	74
<b>South Lakeland</b>	75	88	298	286
<b>TOTAL</b>	401	606	1382	1199

## Cumbrian districts monthly snapshot data - Covid-19 placements and support needs



## C19 Response to support the health of homeless people

- Accommodate people to get them off the streets.
- Maintained normal level of service
- Maintaining a local presence to support clients
- Voluntary Sectors assisted with food supplies and Local business donations and sourced furniture
- Provided safe social distance Housing Support and Accommodation
- Multi agency meetings to address conflict in TA and signposting.
- Worked with RPs on supported housing to find move-on accommodation from STA.
- Sourced additional hotel accommodation outside of area to separate high risk clients.
- Issued mobile phones to vulnerable homeless clients

Bay Health &  
Care Partners  
*delivering*



# Health and Homelessness

20<sup>th</sup> November 2020

Julia Westaway  
Population Health and Childrens System Senior Manager  
Morecambe Bay CCG



# Lancashire & S Cumbria ICS/ Lancashire approach



Work with health and other partners from each Integrated Care Partnership (ICP) area to strengthen links across agencies to provide a holistic approach to identifying the needs of individuals, tackling issues and providing a range of targeted support.

Bay Health &  
Care  
delivering



- Established S Cumbria group to coordinate this



# Benefits

- Closer working between partners



- MDTs arranged via ICCs – link into existing support networks, more holistic health response
- Discharge SOP
- Optometry approach





# Recommendations

1. Rapid access to initial holistic needs assessment
2. Quick access (ideally within a week) to provision of mental health, physical health and drug and alcohol support;
3. Additional support for people moving on to more settled accommodation and a longer term enhanced offer of proactive support.
4. A consistent offer for mental health, substance misuse and smoking cessation
5. An inclusive model for promotion of healthy living / prevention and easier access to care, including testing out models for GP registration; encouraging take up of screening and immunisations; other priority care such as wound management, dental and eye health support

Bay Health &  
Care Partners  
delivering

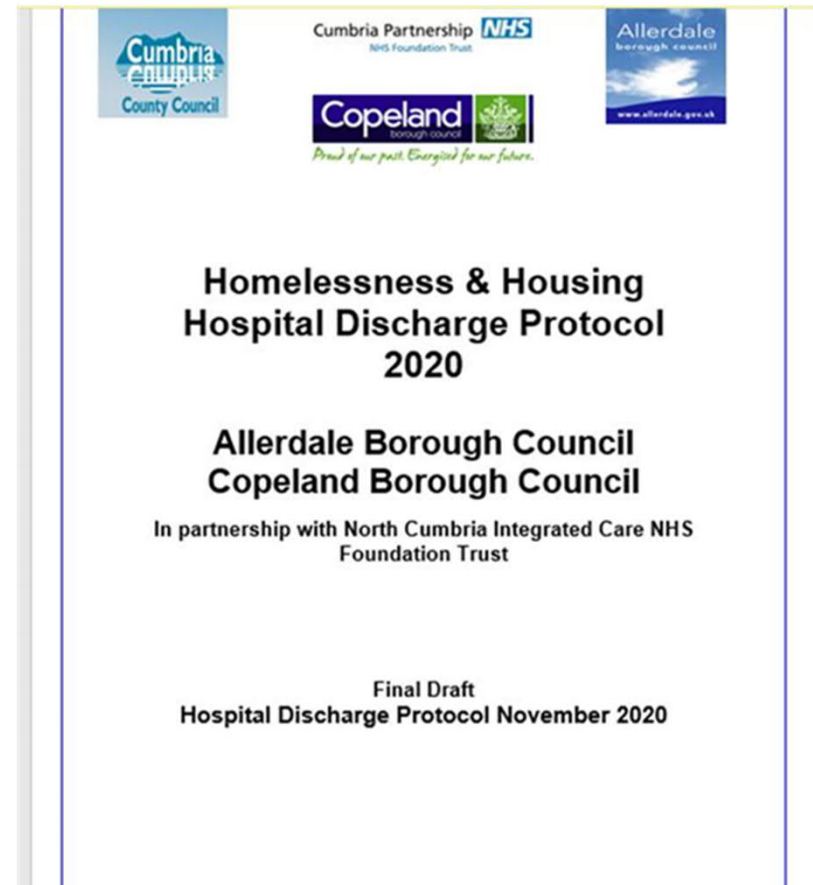


## What have we been doing to support homeless people the health and wellbeing of people

### Strategic Partnership – West Cumbria Hospital Discharge Protocol

The Protocol has been signed up to by all relevant agencies:

- North Cumbria Integrated Care NHS Foundation Trust
  - Copeland Borough Council
  - Allerdale Borough Council
  - Cumbria County Council Adult Social Care
- 
- The protocol is underpinned by the process and a review of this will take place in December to make sure that the process is streamlined.
  - Monitor referrals via Duty to refer will be reviewed to ensure process to streamline.
  - RSC – now attending the weekly meeting to prevent people from being discharge so that they are
    - Prevented from being homeless
    - Property is suitable for the needs
- 
- Early assessment/intervention planned to ensure successful discharge plan.



# North Cumbria: Early Progress



- North Cumbria leads have spent time with Julia to share & learn from good Practice.
- Borough Councils very active in working towards implementing a similar approach.
- Housing Officer attends daily MDT meetings at WCH. It is the intention to replicate this approach at CI.
- Every ICC currently has an MDT set up to consider mostly frail elderly. They have been approached to extend their remit to include homeless patients. There are 8 ICCs in North Cumbria.
- We are working with NCIC to introduce the ‘Homelessness Protocol’ in acute and minor injury settings.
- We are working with our PCNs to ensure access to GP health screening.

## Recovery to support Health and Homelessness (rough sleepers, sofa surfing, temporary accommodation)

Key Recovery Issues: (but not exhaustive)

- Shortage of temporary accommodation
- Shortage of suitable move on accommodation
- Supported Housing Generic funding – from Sept 2020
- Accessing YP services for those who fall outside of statutory services
- On-going support for move-on / staffing / cost to the Council.
- SWEP – need for people to have ability to self isolate – shared facilities pose a potential risk in TA/Emergency accommodation. This verses the statutory requirement to have in place emergency accommodation.
- Potential increase in C19 homeless related presentations through the winter period.
- Cohort still cannot find housing for due to drug and alcohol use, offending backgrounds.

## Summary some of the recovery actions

- Preventing and reducing homelessness and rough sleeping – HRA 2018
- Support most vulnerable people and sign-post to specialist services
- Finding suitable move-one accommodation
- Working with key agencies to ensure outcomes for clients can be achieved.
- Prioritising funding of services/resources
- Embed the hospital discharge protocol across Cumbria.
- Better understanding of the health issues of homeless people and services needed to achieve positive outcomes.
- Finding a collaborative solution to support those slipping through the net. – Complex cases
- Keep people safe during 2<sup>nd</sup> wave of Corona
- Ensure homeless assessments are carried out in a timely manner to maximise suitable interventions.
- Seek opportunities to access external funding to support future deliver

Thank You

Andrea Smith, Policy Manager (Housing) Allerdale Borough Council

Julia Westaway, Population Health and Children's System Senior  
Manager Morecambe Bay CCG