



Healthier
**Lancashire &
South Cumbria**



STP Update for Cumbria Health Scrutiny

**Gary Raphael, Finance Director
Neil Greaves, Communications and
Engagement Manager
26th February 2018**



Healthier
**Lancashire &
South Cumbria**

What we will cover...

- **Our journey** – what are the challenges in Lancashire and South Cumbria
- **Partnership approach** - working to become an integrated care system
- **Decision making** – establishing system wide governance
- **Next steps** – where are we making progress and what is coming in 2018

Get involved in the conversation on social media:

@HealthierLSC

#HealthierLSC



Our challenges

- Financial shortfalls due to increased demand for services
- Poor health throughout our region
- Lack of joined-up care
- An ageing population with complex needs
- Problems recruiting and retaining staff
- Increased need for mental-health support

Get involved in the conversation on social media:

@HealthierLSC

#HealthierLSC



In July, NHS England compared STPs nationally:

- Lancashire and South Cumbria identified as 'Advanced'
- Demonstrates the strength of the collective efforts of organisations in the region to maintain and improve performance
- Strong platform to build on

Get involved in the conversation on social media:

@HealthierLSC

#HealthierLSC



The Sustainability and Transformation Partnership is working to become an Integrated Care System for Lancashire and South Cumbria

Made up of **five** Integrated Care Partnerships

Tackling **three** major gaps:

- Health and Wellbeing
- Care and Quality
- Finance and Efficiency



Get involved in the conversation on social media:

@HealthierLSC

#HealthierLSC

Significant progress in governing and assuring the whole system has included establishing:

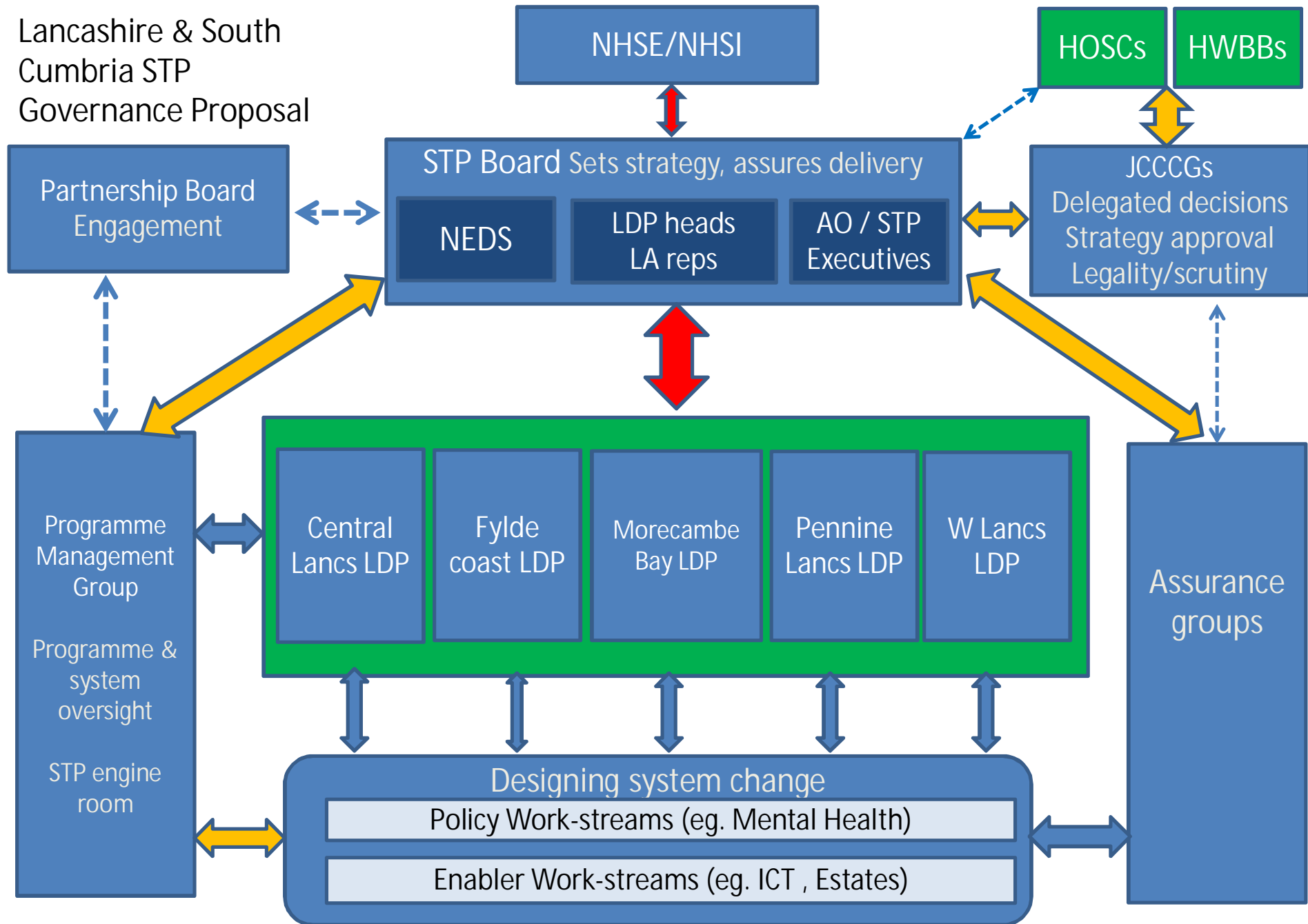
- A STP Board
 - A Joint Committee of CCGs with powers delegated from constituent CCGs to make legally binding decisions
 - A Partnership Board, comprising senior representatives from a wide range of statutory and third sector organisations, primary care and Healthwatch
 - A Social Partnership Forum bringing together trade unions, NHS Employers and staff-side representatives
 - All GP surgeries working in Primary Care Networks
-

Get involved in the conversation on social media:

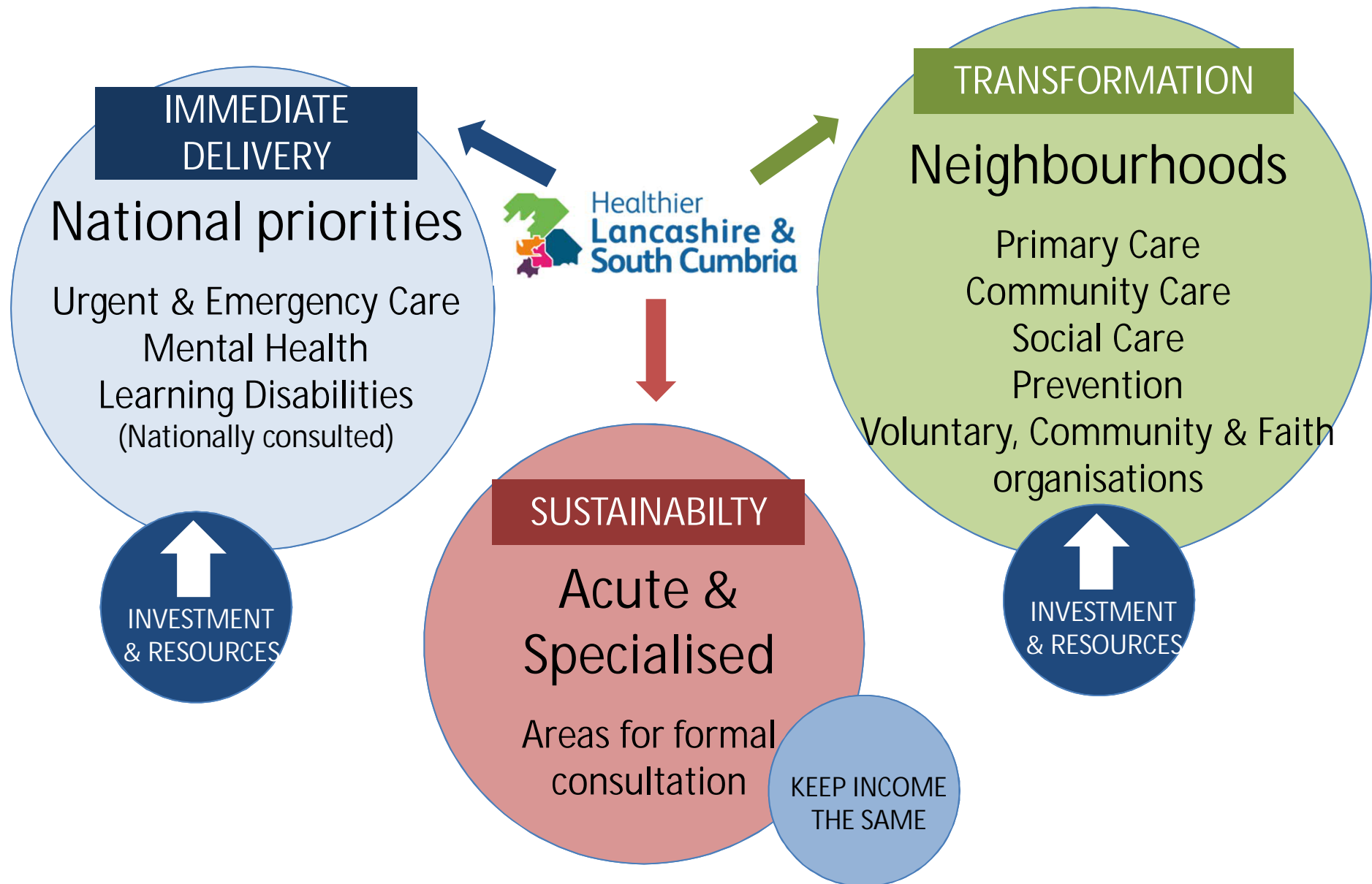
@HealthierLSC

#HealthierLSC





Whole system focused on sustainability; transformation; design of future state



The partnership has been working to adopt a “place-based approach” to commissioning in Lancashire and South Cumbria.

This means:

- Commissioning organisations (health and local government) should work together to govern the common resources available for improving health and care in their area
- The approach taken to developing local systems of care should be determined using a common set of design and operating principles
- Changes to the roles of commissioners are needed to support the development of systems of care across the ICS and in local ICPs.

Get involved in the conversation on social media:

@HealthierLSC

#HealthierLSC



It proposed that in Lancashire and South Cumbria, that place-based commissioning should work at three levels:

- **Collective** – at the level of Lancashire and South Cumbria
- **At the level of the Integrated Care Partnership** (Fylde Coast, Morecambe Bay, Central Lancashire, West Lancashire, Pennine Lancashire)
- **Neighbourhood-** which could be a district or smaller community level of around 30-50,000 population

Get involved in the conversation on social media:

@HealthierLSC

#HealthierLSC



The following are priority areas for Lancashire and South Cumbria:

- Delivering transformed primary care to provide a service that is sustainable, efficient, effective and attractive to work in
- Improving the whole stroke pathway for patients including prevention, primary care, in-hospital services and rehabilitation
- Implementing a Suicide Prevention Strategy that aims to reduce suicide by 10% by 2020
- Improving population health by focusing on developing neighbourhoods and the prevention of stroke and

diabetes

Get involved in the conversation on social media:

@HealthierLSC

#HealthierLSC



Glossary of Terms



- **Integrated Care System (ICS)** – the whole system that we are seeking to create across Lancashire and South Cumbria (commissioners, providers and regulators).
- **Local Delivery Plan areas (LDP), becoming known as Integrated Care Partnerships (ICP)** – sub Lancashire and South Cumbria level systems i.e. Pennine, Fylde Coast, West Lancashire, Morecambe Bay, Central Lancashire (commissioners and providers).
- **Neighbourhood** – sub LDP area level systems e.g. Fleetwood, Millom etc, (which may or may not align to local authority districts, depending on local arrangements)

Get involved in the conversation on social media:

@HealthierLSC

#HealthierLSC



- **Place based commissioning** – commissioners organising themselves so that they collaborate together to address the challenges and improve the health of any defined population
- **Collective Commissioning** – commissioning collaboratively across the whole geography of Lancashire and South Cumbria
- **Sustainability and Transformation Partnership (STP)** – the partnership of NHS and other organisations working to deliver our 5 year **Sustainability and Transformation Plan** for Lancashire and South Cumbria that describes how we will improve quality, develop new models of care; improve health and wellbeing; and

Get involved in the conversation on social media.

@HealthierLSC

#HealthierLSC

