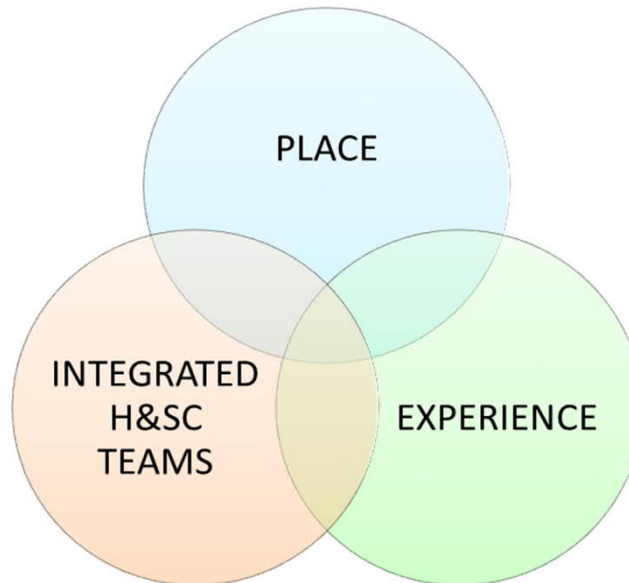


Carlisle Local Committee

9 July 2019

Update on Integrated Care Communities (ICC)

The ICC Model



- The integrated teams - better coordinated care through joint working across the system
- The place - tackling the wider determinants of health
- The experience – citizens taking more control for their own better health outcomes

North Cumbria ICCs



1. [Carlisle Healthcare ICC](#)

2. [Carlisle Network ICC](#)

3. [Brampton & Longtown ICC](#)

4. [Copeland ICC](#)

5. [Eden ICC](#)

6. [Keswick and Solway ICC](#)

7. [Maryport and Cockermouth ICC](#)

8. [Workington ICC](#)

Initial Activity

- Coordination Hubs – Daily Huddle/ Multi-Disciplinary Teams/ Data analysis
- Rapid Response – Lead Professional of the Day
- Discharge to Assess
- Home First
- Frailty coordinators
- GP investment
- Community Hospitals

Impact of ICCs

- Reduced time in hospital
- Reduced number of emergency admissions to hospital
- Patient Experience

Next Phase for ICCs

Continue to develop ICC based primary and community care services

Support ICCs to develop patient and wider community involvement approaches, linking into existing forums and wider partners

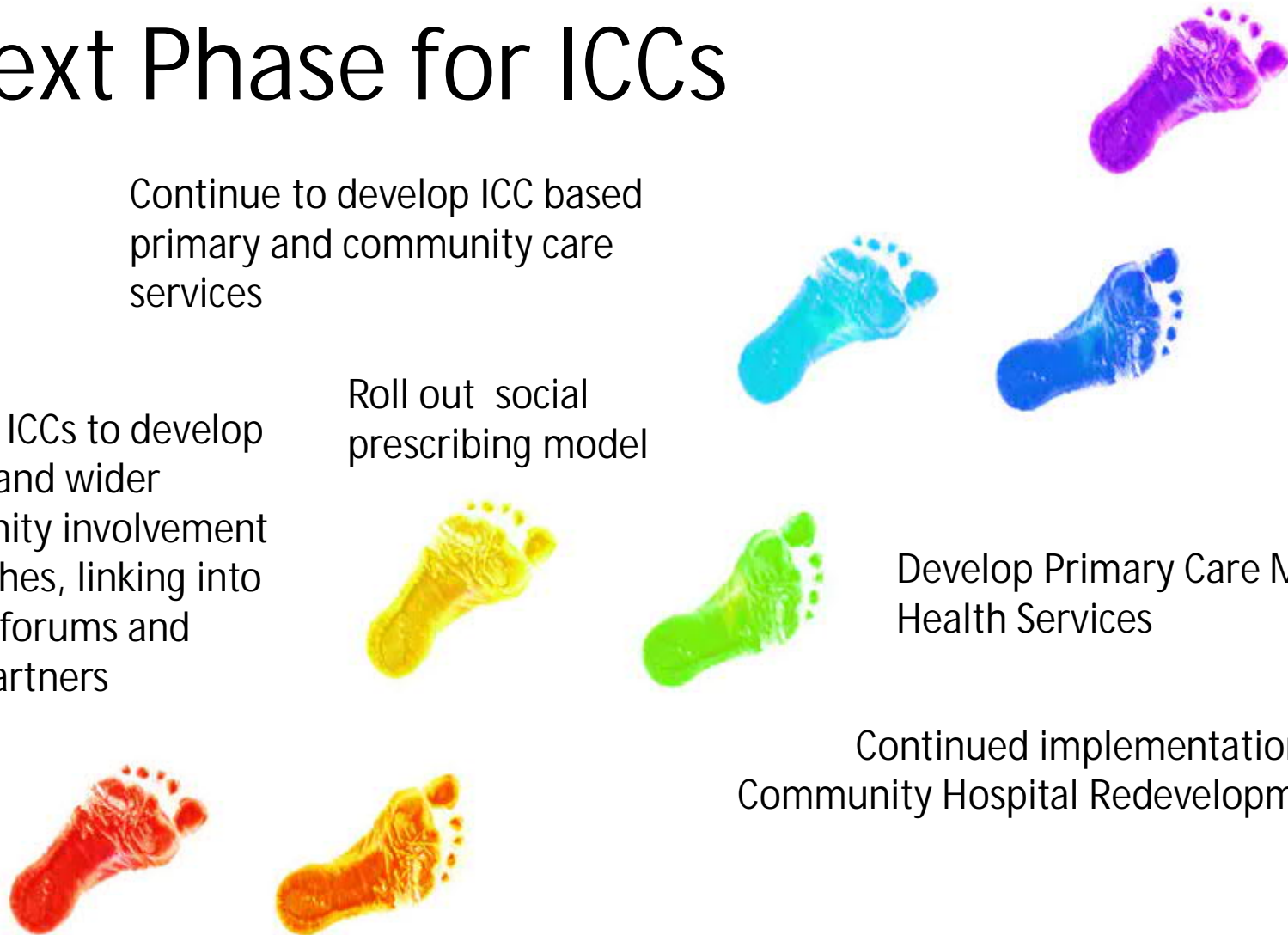
Roll out social prescribing model

Develop Primary Care Mental Health Services

Continued implementation of Community Hospital Redevelopment

Work more closely with residential and nursing homes to improve the health and wellbeing of residents

Embed third sector working across ICCs



Joint Health and Wellbeing Strategy 2019-29 (10 years)

Vision: To enable Cumbrian communities to be healthy and to tackle health inequalities

Overarching Public Health Priorities:

- Improving mental wellbeing of children and adults
- Improving diet and tackling obesity
- Reducing the prevalence of smoking
- Promoting physical activity
- Promoting breastfeeding

How can you Help?

Questions