



Cumbria County Council

One Public Estate
Barrow Local Committee
6th March 2020

Allan Harty

Agenda

- What is One Public Estate (OPE)?
- One Public Estate in Cumbria
- Strategic Objectives and Workstreams
- Benefits to Partners of being involved
- Next Steps

What is One Public Estate?

A Cabinet Office initiative in partnership with the Local Government Association:



Serving the people of Cumbria

One Public Estate – National Context

- Launched in 2013, **One Public Estate** has grown from supporting 12 councils to over 100, all delivering ambitious projects to meet local need.
- Working with over 90 per cent of councils in 76 partnerships, 13 government departments, and hundreds of health and blue light organisations.
- Working together and breaking down historical barriers to get the best use of public land and property.
- By 2020, projects are expected to deliver £615 million in capital receipts and £158 million in running cost savings, create 44,000 jobs and release land for 25,000 homes.

One Public Estate – Cumbria

- Arrangements in Cumbria are hosted by Carlisle City Council and is currently made up of:
 - All Cumbrian Local Authorities
 - North Cumbria Integrated Care NHS Foundation Trust
 - Cumbria Association of Local Councils
 - Lake District National Park Authority
 - Cumbria Constabulary
 - Cumbria Local Enterprise Partnership (LEP)
 - Environment Agency (EA)
 - Department for Work and Pensions (DWP)
 - Her Majesty’s Courts and Tribunals Service (HMCTS)
 - Department for the Environment, Food and Rural Affairs (DEFRA)
 - Castles and Coasts Housing Association
 - University of Cumbria.



Serving the people of Cumbria

Funding

- Carlisle City Council as the Host Authority first applied for OPE funding in 2017 on behalf of Cumbria partners
- Awarded sufficient funds to recruit a Programme Manager to develop a Services and Assets Delivery Plan (SADP) across the Partnership (£0.100m).
- Further funding received in February 2019 (£0.120m) – fully funded by the Cabinet Office Government Property Unit.
- More funding expected in 2020 – £15.000m Nationally

Benefits to Cumbria

- Build on existing partnership work
- Access to funding for project development
- Technical support from analysts and data experts, including recording and mapping assets
- Strengthens our relationship with Cabinet Office
- Brings all public sector partners to the table - for example NHS, Police, DWP
- The schemes are identified through existing local plans, strategies, area plans to meet local needs

Benefits



One Public Estate – Requirements

- Record all property assets owned by partnership authorities (except social housing stock) and public sector partners on the e-PIMS Lite system - adhering to emerging requirements under the Local Government Transparency Code and adopting good practice to build a broader picture to assist with Asset Planning and Management across various bodies.
- Provide information on the estimated value of all local authority owned land and buildings within your partnership area
- Make details of all land and property owned by the partnership publicly accessible, including in authorities' statutory annual reports
- Provide details of current surplus land and land which is expected to become surplus or redeveloped as part of this programme
- Provide data on all local authority land releases since 2015 and assumed housing capacity
- Provide information on all local authority land planned for release before March 2020 and assumed housing capacity

Strategic Objectives and Workstreams

- One Public Estate Strategic Objectives
 - Creating economic growth (new homes and jobs)
 - Delivering more integrated, customer-focused services
 - Generating efficiencies, through capital receipts and reduced running costs.

Health and Communities	Access to integrated health facilities, aligned to public health and social care priorities
Public Reform and Efficiency	Development and delivery of public sector hubs providing joint support from participating organisations for face to face, telephone and web based services
Town and City Centre Regeneration	Town and city centre master planning, project development, land and property assembly and developer partnerships
Housing Delivery	Effective utilisation of public sector land and property for housing and infrastructure delivery
Economic Growth	Alignment of public sector assets and LEP Local Industrial Strategy implementation plans

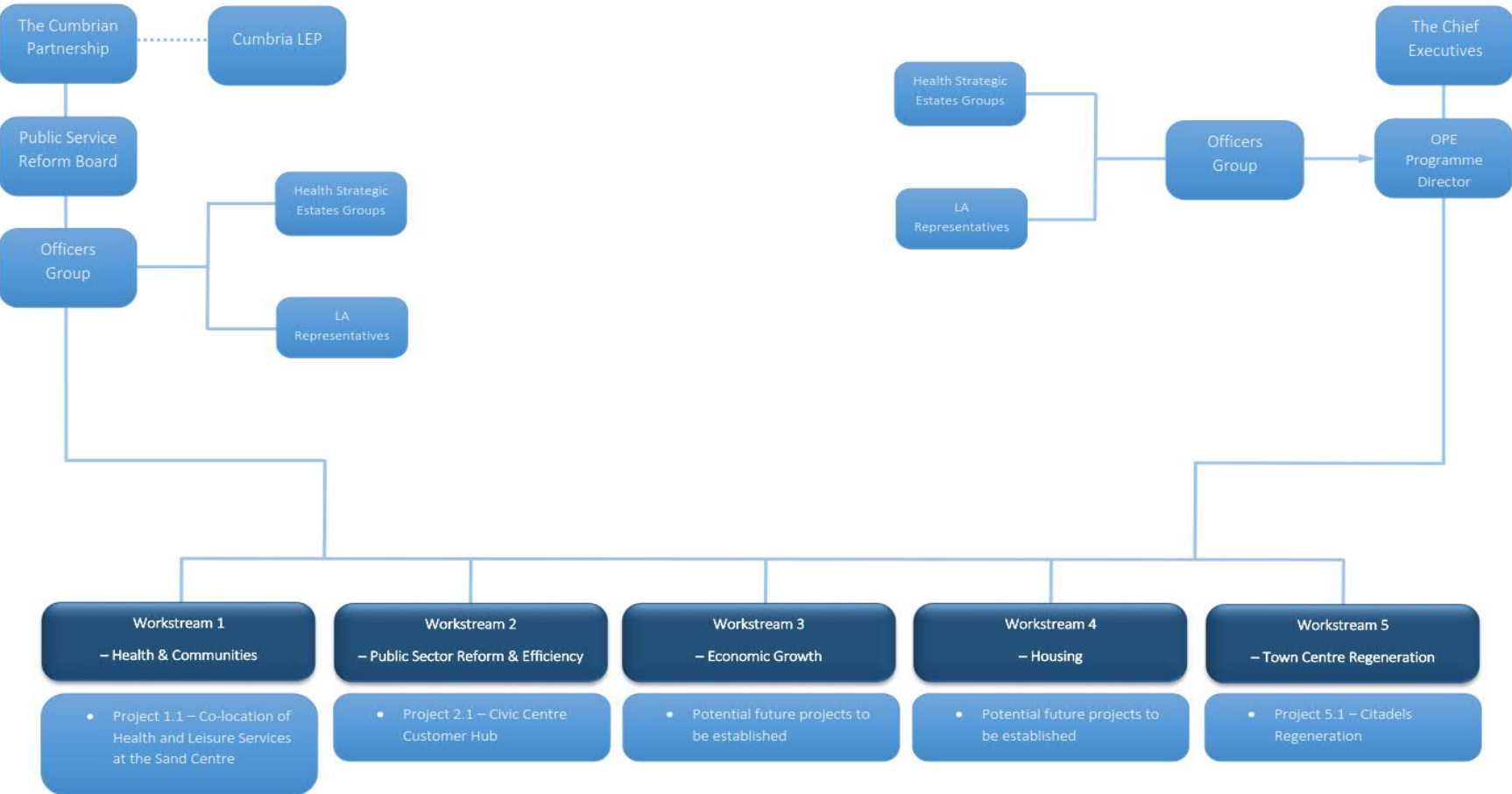


Serving the people of Cumbria

Workstreams – Addressing Local Priorities

Long Term Structure

Short Term Structure



Serving the people of Cumbria

Cumbria OPE Sponsors Cumbria Chief Executives Group



Health & Communities
Stephen Eames – CEO North Cumbria Integrated Care NHS Foundation Trust



Public Reform and Efficiency
Katherine Fairclough – CEX Cumbria County Council



Economic Growth
Jo Lappin – CEX CLEP



Housing
Pat Graham – CEX Copeland Borough Council



Town Centre Regeneration
Jason Gooding – CEX Carlisle City Council

Next Steps

- We will link into Area Planning to identify projects which are aligned to Council priorities, with early engagement with Members
 - Portfolio Briefings
 - Local Committee engagement
- Any decisions for CCC will be made through existing Governance i.e. Cabinet/Council etc
Continue to work with partners to define programme and strategic opportunities

Discussion and Questions



Serving the people of Cumbria