

Route Map

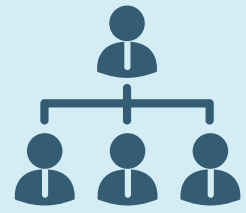
April 2021

- Revised Governance framework and Board composition



May 2021

- Hosting arrangements drafted
- Pre-TUPE engagement process begins
- Outline management structure



July 2021

- Updated Governance framework and Board composition to Board
- Decision on Host
- LIMS out to tender

September 2021

- Start of detailed design process



October 2021

- Due diligence exercise complete



November 2021

- Begin formal TUPE consultation



December 2021

- Target Operating Framework published
- LIMS Business Case completed



January 2022

- Appointment of preferred building contractor



February 2022

- Conclude formal TUPE consultation
- Formal ratification of collaboration agreement
- Formal agreement to financial arrangements

April 2022

- Establishment of Lancashire & South Cumbria Pathology Service
- Transfer of staff to host Trust following TUPE consultation
- Transfer of financial and other resources

May 2022

- Agree GMP



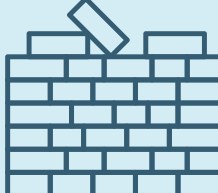
September 2022

- Finalise Full Business Case
- Submit FBC for approval



December 2022

- FBC approval
- Construction begins



December 2023

- Construction complete

